

PRESS RELEASE

MAXIMUM RETAIL PETROLEUM PUMP PRICES IN KENYA FOR THE PERIOD 15TH OCTOBER 2019 TO 14TH NOVEMBER 2019

In accordance with Legal Notice No.196 of 2010, the Energy (Petroleum Pricing) Regulations and the amendment thereof, the Energy & Petroleum Regulatory Authority (EPRA) has calculated the maximum retail pump prices of petroleum products, which will be in force from 15th October to 14th November 2019.

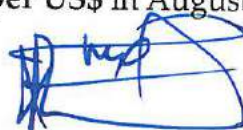
Taking into account the weighted average cost of imported refined petroleum products, the changes in the maximum allowed petroleum pump prices in Nairobi are as follows: **Super Petrol and Diesel decrease by KShs 4.76 per litre and KShs 1.08 per litre respectively** while **Kerosene increases by KShs 0.44 per litre**. The pump prices are inclusive of 8% Value Added Tax (VAT) in line with the provisions of the Finance Act 2018 and the revised rates for excise duty adjusted for inflation as per Legal Notice No. 109 of 9th July 2019.

The changes in this month's prices have been as a consequence of the average landed cost of imported **Super Petrol** decreasing by 7.66% from US\$ 497.36 per cubic metre in August 2019 to US\$ 459.27 per cubic metre in September 2019; **Diesel** decreasing by 2.32% from US\$ 503.61 per cubic metre to US\$ 491.94 per cubic metre and **Kerosene** increasing by 0.47% from US\$ 484.29 per cubic metre to US\$ 486.55 per cubic metre. The changes in the landed costs are summarized in the table below:

PRODUCT	AUGUST 2019	SEPTEMBER 2019	CHANGE
Super Petrol (US\$/Cubic Metre)	497.36	459.27	-7.66%
Diesel (US\$/Cubic Metre)	503.61	491.94	-2.32%
Kerosene (US\$/Cubic Metre)	484.29	486.55	+0.47%

The Free On board (FOB) price of Murban crude oil lifted in September 2019 was posted at US\$ 64.42 per barrel, an increase of 3.40% from US\$ 62.30 per barrel in August 2019.

Over the same period, the mean monthly US Dollar to Kenya Shilling exchange rate depreciated by 0.34% from KShs. 103.44 per US\$ in August 2019 to KShs. 103.79 per US\$ in September 2019.




ISO 9001:2015 Certified

A summary of the resultant pump prices for major towns in Kenya is provided as **Annex I**. In addition, a detailed breakdown and a progression of the cost items for the pump prices in Nairobi are provided as **Annex II** and **III** for information.

The table below shows the trend of monthly crude oil prices and exchange rates for the last 12 months:

Month	Oct-18	Nov-18	Dec-18	Jan-19	Feb-19	Mar-19	Apr-19	May-19	Jun-19	Jul-19	Aug-19	Sep-19
Crude Oil Prices (US\$/barrel)	82.30	68.00	59.50	60.95	66.35	68.60	73.05	72.35	64.80	66.15	62.30	64.42
Mean Exchange Rates (KShs/US\$)	101.16	102.44	102.16	101.30	100.17	100.47	101.12	101.20	101.89	103.31	103.44	103.79

The purpose of the fuel pricing regulations is to cap the pump prices of the products, which are already in the country, so that the importation and other prudently incurred costs are recovered, while ensuring reasonable prices to consumers.

The Authority wishes to assure the public of its continued commitment to the observance of fair competition and protection of the interests of both consumers and investors in the energy sector.

Regards,

Robert Pavel Oimeke
DIRECTOR GENERAL

14th October 2019

ANNEX I

15 th October 2019 – 14 th November 2019				
	TOWNS	MAXIMUM PUMP PRICES		
		Super Petrol (PMS)	Automotive Diesel (AGO)	Kerosene (IK)
		KShs/L	KShs/L	KShs/L
1	Mombasa	105.44	99.35	98.47
2	Kilifi	105.63	99.54	98.67
3	Likoni Mainland	105.79	99.70	98.83
4	Kwale	105.79	99.70	98.83
5	Malindi	106.28	100.19	99.32
6	Lungalunga	106.64	100.55	99.67
7	Voi	106.93	100.84	99.97
8	Taveta	108.37	102.29	101.41
9	Lamu	109.13	103.04	102.16
10	Hola	109.02	102.93	102.06
11	Nairobi	108.05	101.96	101.08
12	Thika	108.18	102.10	101.21
13	Machakos	108.18	102.10	101.21
14	Kajiado	108.45	102.37	101.48
15	Makuyu	108.59	102.51	101.62
16	Muranga	108.59	102.51	101.62
17	Sagana	108.69	102.59	101.72
18	Embu	109.19	103.10	102.22
19	Kerugoya	109.21	103.11	102.24
20	Narok	109.41	103.32	102.44
21	Nyeri	109.50	103.41	102.53
22	Namanga	109.60	103.50	102.62
23	Kiganjo	109.63	103.54	102.66
24	Chuka	109.67	103.58	102.70
25	Kitui	109.67	103.58	102.70
26	Mwingi	109.70	103.61	102.72
27	Nanyuki	110.06	103.96	103.09
28	Nkubu	110.29	104.20	103.32
29	Mtito Andei	110.53	104.43	103.56
30	Meru	110.55	104.46	103.58
31	Isiolo	111.07	104.98	104.10
32	Maua	111.07	104.98	104.10
33	Garissa	112.31	106.22	105.34
34	Marsabit	114.48	108.39	107.51
35	Liboi	114.99	108.89	108.02



ANNEX I

15 th October 2019 – 14 th November 2019				
	TOWNS	MAXIMUM PUMP PRICES		
		Super Petrol (PMS)	Automotive Diesel (AGO)	Kerosene (IK)
		KShs/L	KShs/L	KShs/L
36	Moyale	117.56	111.47	110.59
37	Sololo	116.58	110.49	109.60
38	Habaswein	114.91	108.81	107.94
39	Dadaab	113.63	107.54	106.66
40	Tarbaj	117.16	111.07	110.19
41	Elwak	118.77	112.67	111.79
42	Wajir	115.73	109.65	108.76
43	Mandera	120.91	114.82	113.94
44	Nakuru	108.56	102.67	101.78
45	Gilgil	108.56	102.67	101.79
46	Mogotio	108.62	102.72	101.84
47	Molo	108.71	102.81	101.93
48	Olunguruone	109.29	103.39	102.52
49	Londiani	108.71	102.81	101.93
50	Nyahururu	108.78	102.88	102.01
51	Archers Post	111.79	105.90	105.02
52	Lodosoit	112.90	107.00	106.12
53	Naivasha	108.89	102.99	102.11
54	Marigat	109.21	103.31	102.43
55	Kabarnet	109.74	103.84	102.97
56	Bomet	110.35	104.45	103.58
57	Maralal	112.43	106.53	105.66
58	Eldoret	109.56	103.66	102.79
59	Kapsabet	109.57	103.68	102.80
60	Webuye	109.74	103.84	102.97
61	Kitale	109.87	103.97	103.10
62	Kapenguria	110.25	104.35	103.47
63	Bungoma	110.27	104.37	103.50
64	Moiben	109.60	103.70	102.83
65	Matunda	109.54	103.64	102.77
66	Burnt Forest	109.50	103.62	102.73
67	Tambach	109.59	103.69	102.81
68	Kapsowar	109.79	103.89	103.00
69	Chebara	109.69	103.79	102.92
70	Kimwarer	109.87	103.97	103.10



ISO 9001:2015 Certified

ANNEX I

15 th October 2019 – 14 th November 2019				
	TOWNS	MAXIMUM PUMP PRICES		
		Super Petrol (PMS)	Automotive Diesel (AGO)	Kerosene (IK)
		KShs/L	KShs/L	KShs/L
71	Timboroa	109.80	103.90	103.01
72	Nandi Hills	109.75	103.86	102.98
73	Kaiboi	109.56	103.66	102.79
74	Kiminini	110.08	104.18	103.31
75	Endebes	110.14	104.24	103.37
76	Saboti	110.29	104.41	103.52
77	Chepareria	110.60	104.70	103.82
78	Lomut	111.50	105.60	104.73
79	Burgich	111.91	106.02	105.14
80	Sigor	111.27	105.37	104.49
81	Lowdar	113.74	107.84	106.97
82	Kakuma	115.33	109.43	108.55
83	Lokichar	112.65	106.76	105.88
84	Kalokol	114.50	108.61	107.72
85	Lokori	113.52	107.62	106.74
86	Lokitaung	116.48	110.58	109.71
87	Kapedo	111.79	105.90	105.02
88	Malaba	110.70	104.81	103.92
89	Lokichogio	116.89	110.99	110.12
90	Kisumu	109.56	103.66	102.78
91	Sondu	109.56	103.66	102.78
92	Oyugis	109.56	103.66	102.78
93	Kakamega	109.62	103.73	102.84
94	Bondo	109.83	103.93	103.06
95	Siaya	109.88	103.98	103.10
96	Kericho	110.01	104.11	103.23
97	Nyamira	110.12	104.22	103.35
98	Kisii	110.43	104.54	103.66
99	Sotik	110.66	104.76	103.88
100	Keroka	110.76	104.86	103.99
101	Busia	110.76	104.86	103.99
102	Homabay	111.10	105.22	104.33
103	Migori	111.33	105.43	104.56
104	Isebania	111.49	105.59	104.72



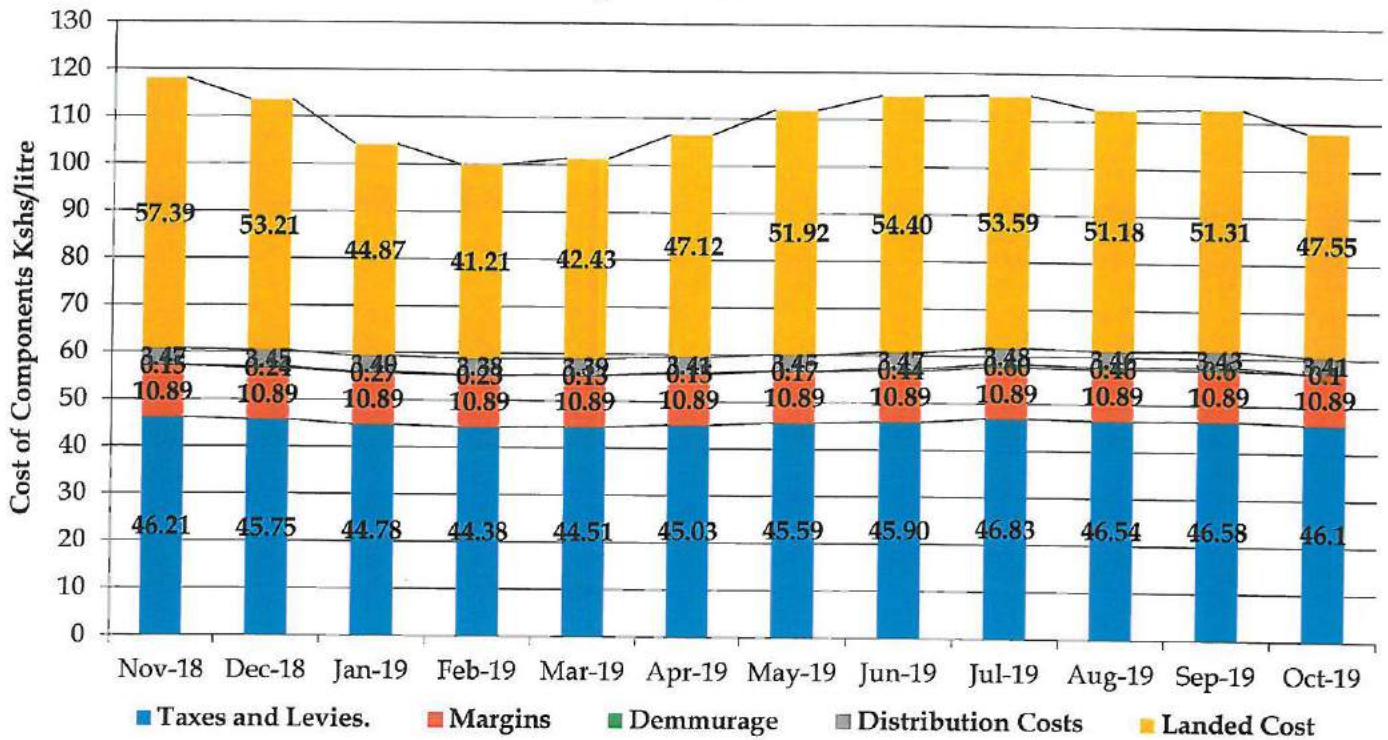
ISO 9001:2015 Certified

ANNEX II

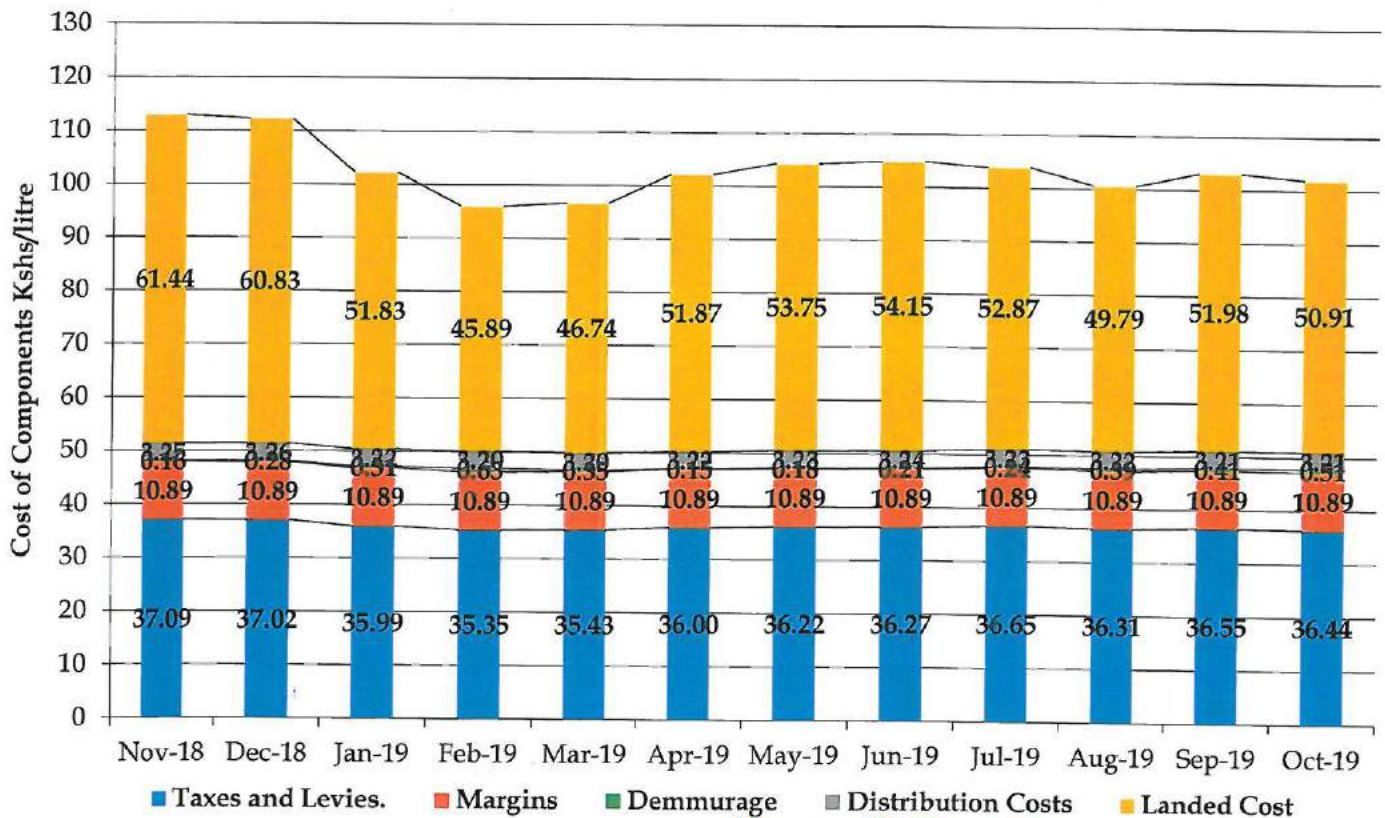
Breakdown of the costs of Super Petrol (PMS), Diesel (AGO) and Kerosene (DPK) in Nairobi: 15th October 2019 - 14th November 2019				
Cost Item	Cost Description	Super Petrol KShs/Litre	Diesel KShs/Litre	Kerosene KShs/Litre
Landed Cost (a)	Weighted Average cost for all imports	<u>47.65</u>	<u>51.42</u>	<u>50.63</u>
Pipeline Transport (Msa-Nrb)	Pipeline (100% PMS, AGO & IK)	2.35	2.35	2.35
Road Transport (Msa-Nrb) - Bridging	Road (0% PMS, AGO & IK)	0.00	0.00	0.00
Pipeline Losses	Pipeline (0.25%)	0.08	0.07	0.07
Depot Losses	0.5% PMS; 0.3% For DPK & AGO	0.44	0.25	0.25
Delivery within 40kms of Nrb	Delivery to petrol stations	0.54	0.54	0.54
Storage and distribution (b)		<u>3.41</u>	<u>3.21</u>	<u>3.21</u>
Importers Margin	Wholesale	7.00	7.00	7.00
Dealers Margin	Retail	3.89	3.89	3.89
Oil marketing companies margins (c)		<u>10.89</u>	<u>10.89</u>	<u>10.89</u>
Excise Duty	Tax	20.92	10.84	10.84
Road Maintenance Levy	Levy	18.00	18.00	0.00
Petroleum Development Levy	Levy	0.40	0.40	0.40
Petroleum Regulatory Levy	Levy	0.25	0.25	0.25
Railway Development Levy	Levy	0.68	0.74	0.72
Anti-adulteration Levy	Levy	0.00	0.00	18.00
Merchant Shipping Levy	Levy	0.02	0.03	0.03
Import Declaration Fee	Levy	0.91	0.97	0.97
Value Added Tax (VAT)	Tax	4.91	5.22	5.15
Taxes and levies (d)		<u>46.10</u>	<u>36.44</u>	<u>36.35</u>
Retail Prices in Nairobi (a) + (b) + (c) + (d)		108.05	101.96	101.08
Summary		Super Petrol KShs/Litre	Diesel KShs/Litre	Kerosene KShs/Litre
Products Costs (a)		47.65	51.42	50.63
Distribution and storage Costs (b)		3.41	3.21	3.21
Margins (c)		10.89	10.89	10.89
Taxes & Levies (d)		46.10	36.44	36.35
Retail Prices in Nairobi		108.05	101.96	101.08

ANNEX III

1. Super Petrol



2. Diesel



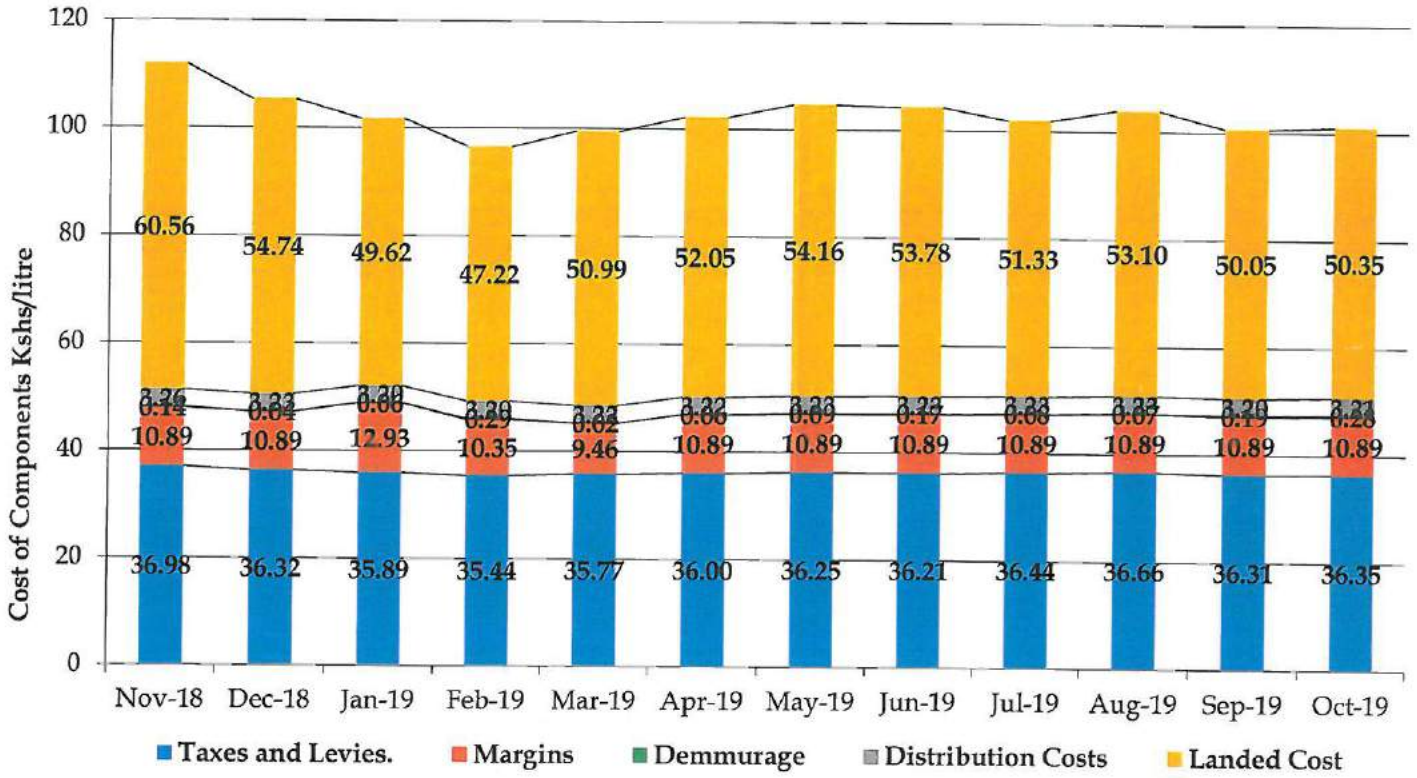
[Handwritten Signature]



ISO 9001:2015 Certified

ANNEX III

3. Kerosene



[Handwritten signature]



ISO 9001:2015 Certified